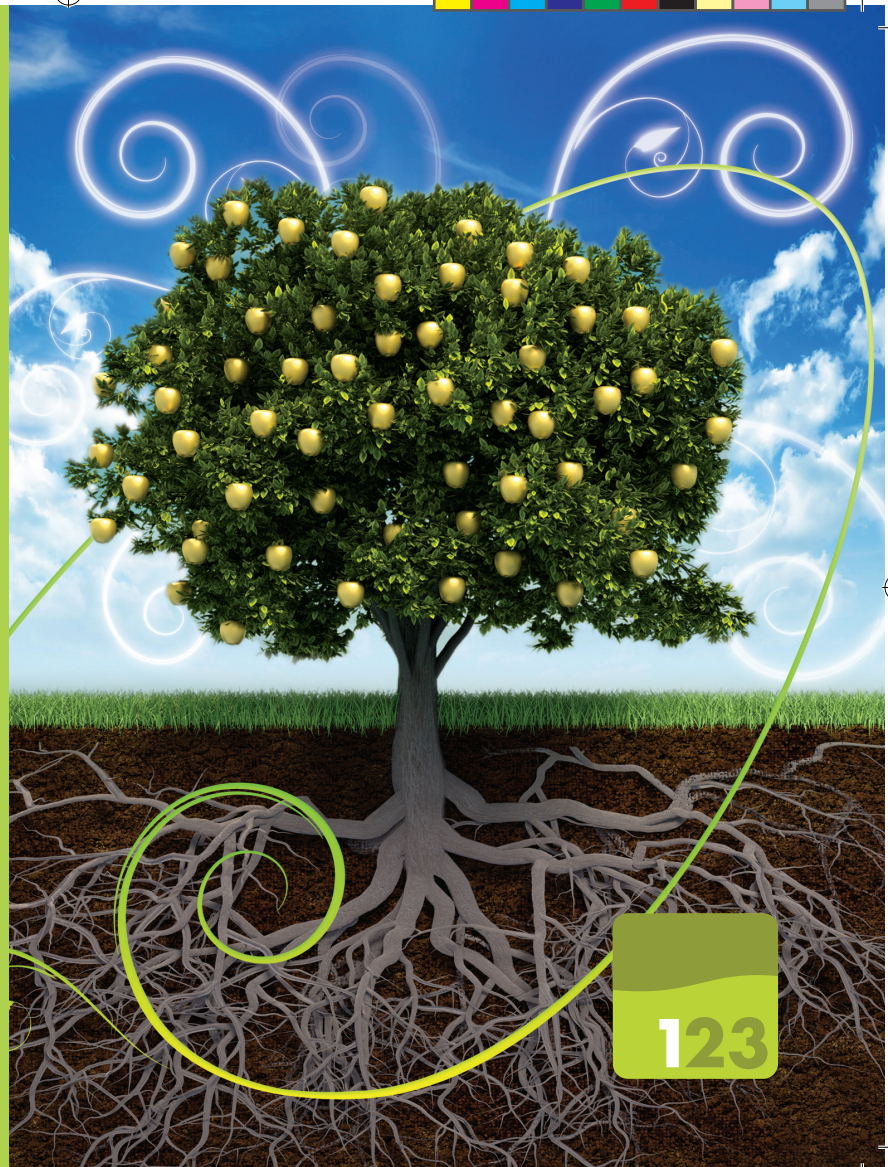




WOMA

keep it
simple





Nr. 1 is a highly concentrated, complete nutrition in powder form which dissolves completely

Woma- Tuintechnik basic nutrition No. 1 differs from all existing basic supplies due to the extremely high concentration. No. 1 basic nutrition is supplied in powder form and is completely soluble in water.

Moreover, it is very easy to dose with an EC meter. Become packed in sturdy, resealable buckets and is therefore easy to carry.

There is basic nutrition for use on earth and basic nutrition for use in hydroponics. The ph- perfect technology in the basic nutrition soil makes it unnecessary to use ph- min or plus.

Available in 1, 4 and 8 kg packing.



Nutrition Charts Soil

WEEK	1	2	3	4	5	6	7	8	9	10	11	12
PHASE	growth	flowering	flowering	flowering	flowering	flowering	flowering	flowering	flowering	flowering	flowering	flowering
BASIC NUTRITION EC VALUE	1.3	1.3	1.4	1.5	1.6	1.7	1.7	1.7	1.7	1.7	1.7	1.7
ROOT STIMULATOR	1 ml	1 ml	1 ml									
BOOSTER						1 ml	1 ml	1 ml	1.5 ml	1.5 ml	1.5 ml	1.5 ml

Nutrition Charts Hydro

WEEK	1	2	3	4	5	6	7	8	9	10	11	12
PHASE	growth	flowering	flowering	flowering	flowering	flowering	flowering	flowering	flowering	flowering	flowering	flowering
BASIC NUTRITION EC VALUE	1.4	1.4	1.5	1.6	1.7	1.8	1.8	1.8	1.8	1.8	1.8	1.8
RECOMMENDED PH VALUE	5.3	5.5	5.7	5.7	5.7	5.7	5.7	5.7	5.7	5.7	5.7	5.7
ROOT STIMULATOR	1 ml	1 ml	1 ml									
BOOSTER						1 ml	1 ml	1 ml	1.5 ml	1.5 ml	1.5 ml	1.5 ml





No. 2 Root Stimulator is extremely powerful

Due to the unique, balanced blend of hormones is No. 2 root stimulator so powerful that it should only be given during growth of flowering crops. With a permanent growing crops (such as mother-crops), it may be permanently given. No. 2 root stimulator can be used on all mediums.

No. 2 root stimulator ensures:

- a very strong and branched root system
- improved and uniform growth of the crop
- increased stress resistance
- more cell division
- better soil structure
- improved air and water management
- better release of nutrients

Available 250ml, 1L and 5L packing.





No. 3 Booster: clear increase in yield

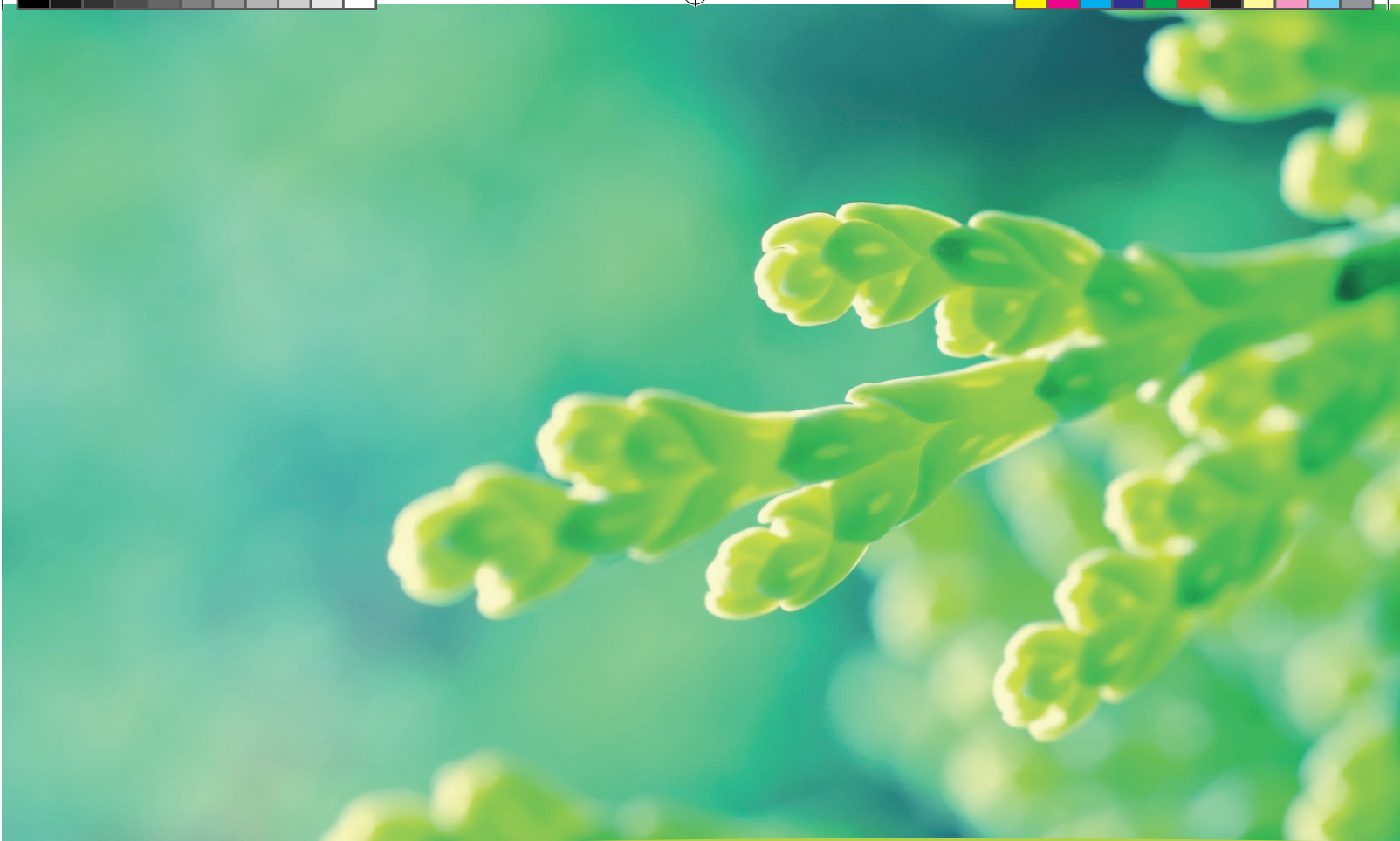
No. 3 is a booster that can be used from 5th week of flowering. Moreover, the booster work after the earth, which makes a positive contribution to the soil. No. 3 booster can be used on all mediums.

No. 3 booster ensures:

- a clear increase in the yield
- a visible stronger plant
- more resistance to diseases and pests

Available 250ml, 1L and 5L packing.







woma-tuintechniek.com

